



**Home to School Transport**

**Service Review**

**2012/13**

**Extract from Children's Services: Schools Service Review Summary**  
The full Summary is available at [www.torbay.gov.uk/budgetsummary](http://www.torbay.gov.uk/budgetsummary)

<b>Service Name:</b>	Schools
----------------------	---------

<b>Service Contact:</b>	Suzie Franklin / Nick Hollins
-------------------------	-------------------------------

<b>Date of review:</b>	June 2012
------------------------	-----------

<b>Version No: 1.0</b>
------------------------

This document can be made available in a range of languages, on tape, in Braille, large print and in other formats.

For further information please contact 01803 207227.

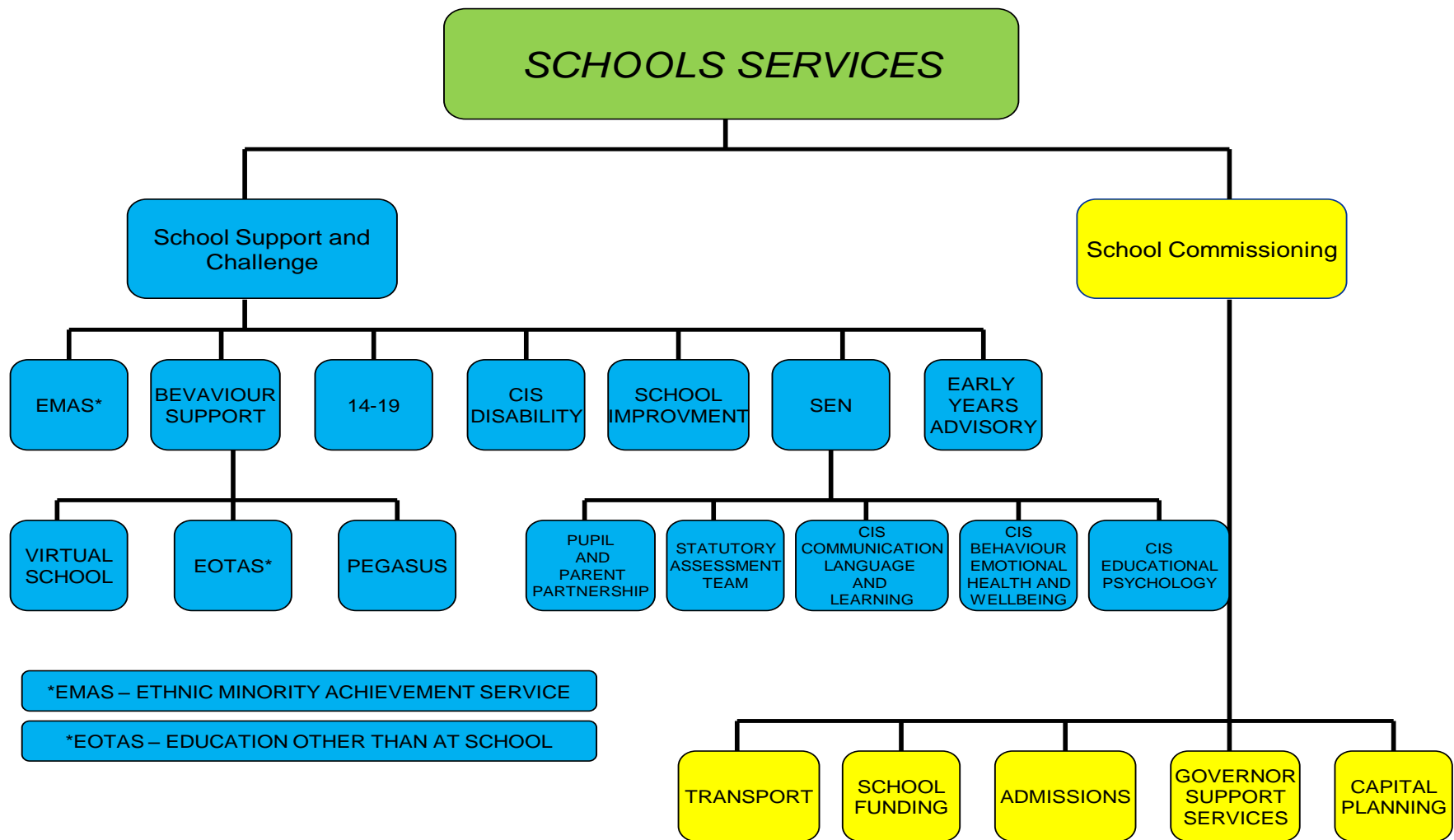
*Disclaimer: These reviews provide a snapshot of council services and activities at the time they were carried out, as we have tried to represent as far as we can the detail of what is provided.*

## **Introduction**

The schools strand of Children's Services is divided in to two, School Support and Challenge and Schools Commissioning. Broadly speaking all services within the commissioning division are functional and provide basic services to schools that are statutory for example home to school transport , schools formula funding and admissions. Services within Support and Challenge includes a wide range services some of which are commissioned on behalf of schools for example school improvement, some like the schools networks and Pegasus are facilitated on behalf of schools and some e.g. disability services, SEN services are delivered directly to schools, children, young people and families.

Many of the functions are statutory, others the Department for Education makes clear that while not statutory we should still be delivering.

The majority of the services are funded from the DSG, while others are part funded by health. Changes to the schools national funding formula will have a considerable impact on the level of funding that the Local Authority will be able to retain in future for the delivery of services. This will be introduced in April 2013 and the majority of DSG funding will be delegated directly to schools. Some services will need to be provided on a 'buy-back' basis from schools.



*Disclaimer: These reviews provide a snapshot of council services and activities at the time they were carried out, as we have tried to represent as far as we can the detail of what is provided.*

**Transport:**

<p><b>What is provided?</b></p>	<p>The Children's Services Transport Team is an integrated team responsible for home to school transport, Children's Social Care transport and Adults' Social care transport.</p> <p>The team provides a home to school transport service for pupils and students who live in Torbay, are aged between 4 and 16 and who are entitled to help to get to school or college. Discretionary transport is also provided to selective and faith schools and post-16 to school or South Devon College.</p> <p>The team is responsible for determining whether a pupil or student is entitled to assistance with transport to school and for planning and managing the provision of this transport in the most suitable and cost effective way.</p> <p>Transport is arranged for SEN pupils and for social care customers, both adult and children. Passenger escorts are provided where vulnerable passengers would be at risk on an unescorted journey.</p>
<p><b>Why is it provided?</b></p>	<p>Education Act 1996 Section 508B. Inserted by section 77 of the Education and Inspections Act 2006.</p> <p>Education &amp; Inspections Act 2006: Statutory duty to provide transport for children on grounds of distance or if parents/guardians are on specified benefits; also, requirement to provide transport for children who are unable to access school e.g. because of a disability or some other special need. Helping families on low income to exercise parental choice. Helping 16-19 year olds to access school or further education to continue their studies.</p> <p>Enabling social care clients to access services including parental contact (for children), visits to day centres (for adults) and medical appointments (for both children and adults).</p>
<p><b>Who uses the services / what is the demand?</b></p>	<p><b>Internal:</b> Adult Social Care; Children with Disabilities team; SEN team; School Admissions team, EOTAS team, Councillors, senior officers</p> <p><b>External:</b> Schools, pupils/students (approx 1800, 10% school population), families</p>
<p><b>How much does it cost to provide?</b></p>	<p>2012/13 budget for Escorts £318,800, 85 Escorts at average 0.35 FTE.</p> <p>Transport team budget for 2012/3 £159,800. 6.5 FTE.</p> <p>Home to school transport £1,379,500 (net) £1,788,000 gross.</p>
<p><b>How well are we providing it? Key achievements in the last 2 years</b></p>	<p>Transport has been provided for all clients as requested. This is in the face of growing demand and the increasingly difficult and specific requirements of both child and adult clients.</p>